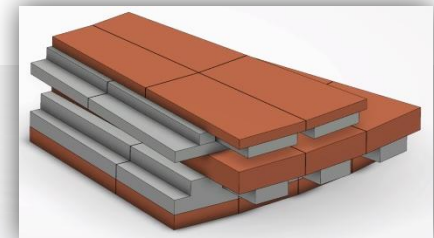
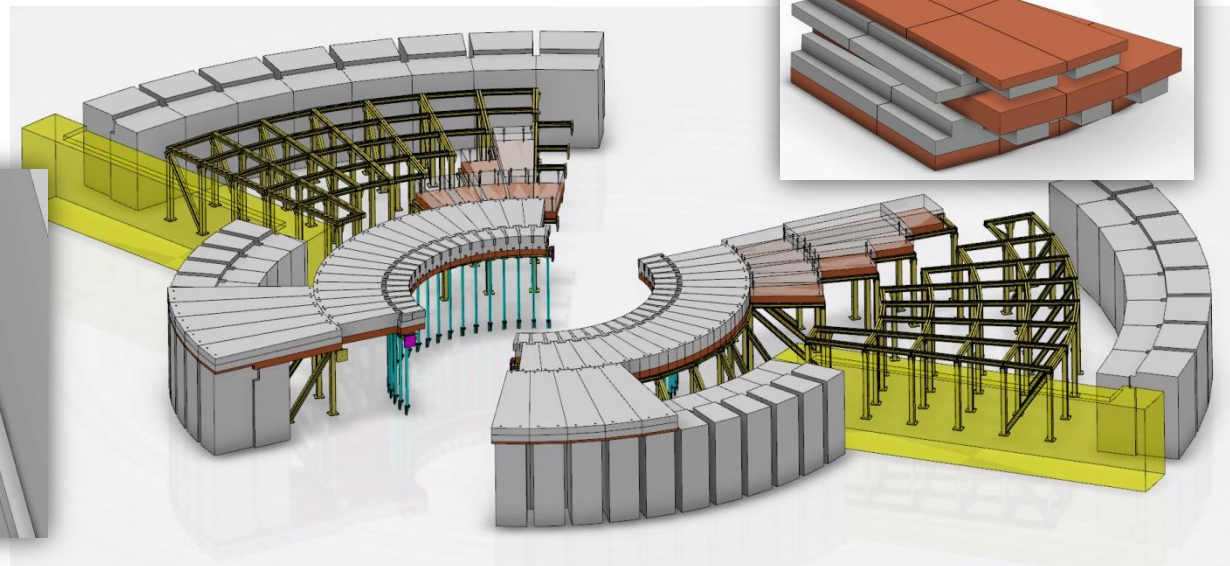
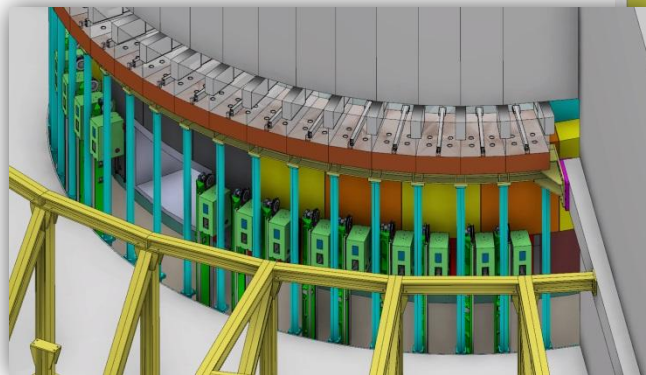


Benjamin Davidge

Mechanical Design Engineer at ESS, Sweden

Responsible for conceptual design of the Bunker at ESS.

- Approx. 14k tonnes total mass
- Wall and roof structure to consist of laminated concrete and steel
- Many integration and operational challenges

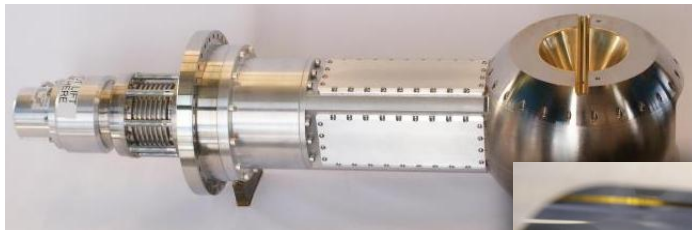
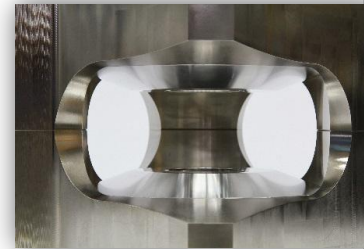


Previous employment at HTS-110 Ltd in Wellington, New Zealand

Currently the only company delivering complete high-temp superconducting magnet systems

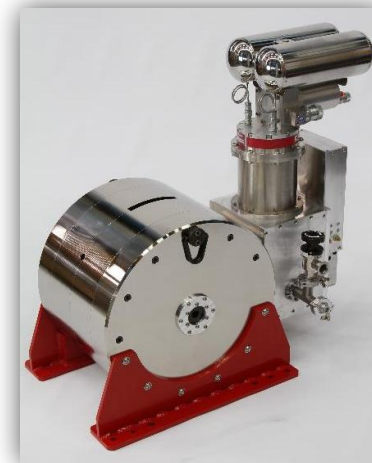
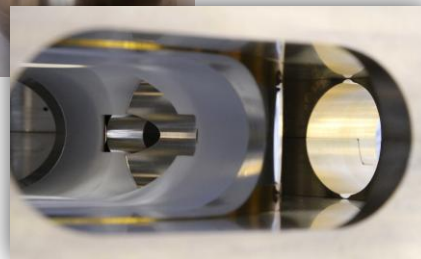


2.2T Instrument magnet -
TOFTOF



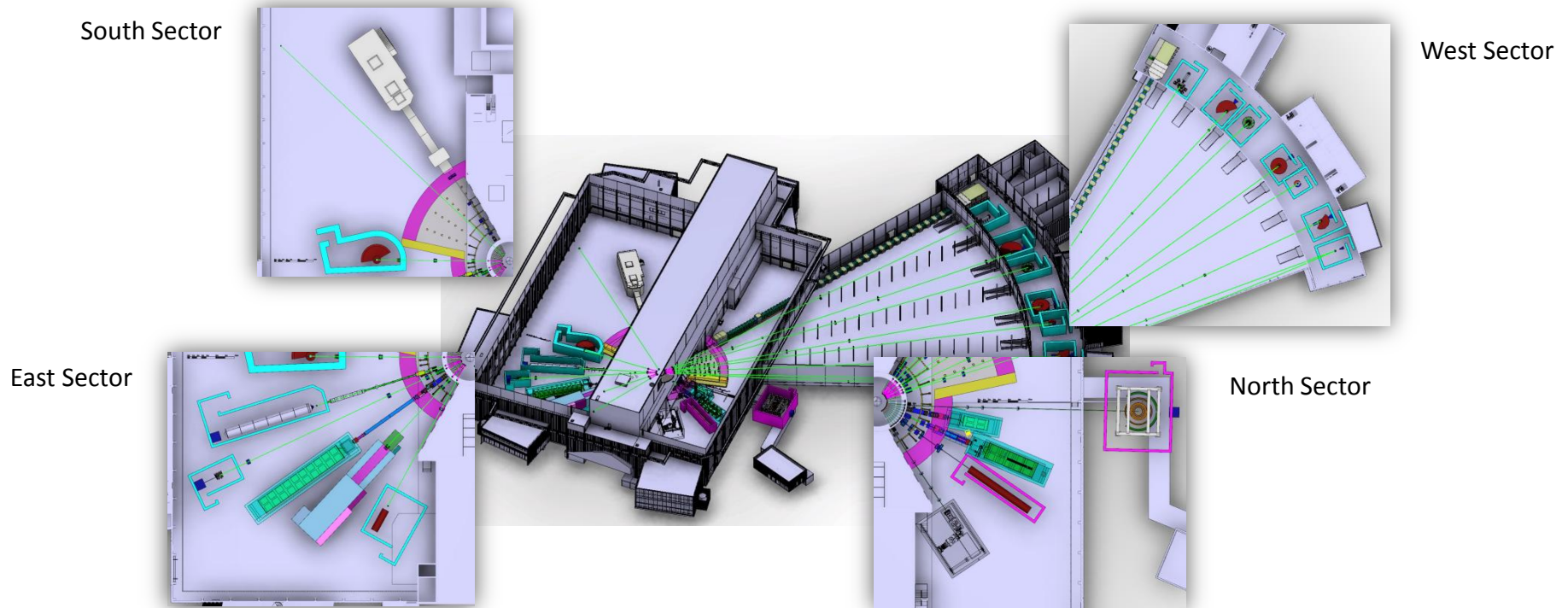
2T UHV Beam Line magnet - Alba

Alba Magnet Bore



7T Fast Ramp
Dipole Magnet

- Involved in full instrument layout study used to define beamport allocation of first 16 instruments at ESS.



- Bunker project to move to in-kind. Expectation my role will change to include potential instrument design, coordination and integration at ESS.